

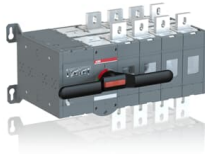



---

 PRODUCT-DETAILS

# OTM1000E4CM230C

## OTM1000E4CM230C MOTORIZED C/O SWITCH




---

**General Information**

Extended Product Type	OTM1000E4CM230C
Product ID	1SCA112703R1001
EAN	6417019453958
Catalog Description	OTM1000E4CM230C MOTORIZED C/O SWITCH
Long Description	Including a handle for manual operation, bolt kit with nut and washers for all terminals and male connectors for control circuits. Include a storage clip for the handle and spare fuses.

---

**Circular Value**

End of Life Instructions	1SCC303060M0201
Environmental Information	1SCC303036D0202

---

**Material Compliance**

Conflict Minerals Reporting Template (CMRT)	9AKK108467A5658
REACH Declaration	1SCC011021D0201
RoHS Information	1SCC011020D0201

RoHS Status

Following EU Directive 2011/65/EU and Amendment 2015/863 July 22, 2019

**Ordering**

Minimum Order Quantity	1 piece
Customs Tariff Number	85365080
Country of Origin	Finland (FI)

**Popular Downloads**

Data Sheet, Technical Information	1SCC303003C0201
Instructions and Manuals	1SCC303002M0206
End of Life Instructions	1SCC303060M0201

**Dimensions**

Product Net Width	587 mm
Product Net Height	306 mm
Product Net Depth / Length	297 mm
Product Net Weight	62 kg

**Technical**

Rated Operational Current AC-21A ( $I_e$ )	(380 ... 415 V) 1000 A (500 V) 1000 A (690 V) 1000 A
Rated Operational Current AC-22A ( $I_e$ )	(380 ... 415 V) 1000 A (500 V) 1000 A (690 V) 1000 A
Rated Operational Current AC-23A ( $I_e$ )	(380 ... 415 V) 1000 A (500 V) 1000 A (690 V) 1000 A
Rated Operational Current AC-31B ( $I_e$ )	(380 ... 415 V) 1000 A
Rated Operational Current AC-33B ( $I_e$ )	(380 ... 415 V) 1000 A
Rated Operational Power AC-23A ( $P_e$ )	(380 ... 415 V) 560 kW (500 V) 710 kW (690 V) 1000 kW
Conventional Free-air Thermal Current ( $I_{th}$ )	$\Theta = 40 \text{ }^\circ\text{C}$ 1000 A
Rated Impulse Withstand Voltage ( $U_{imp}$ )	12 kV
Rated Insulation Voltage ( $U_i$ )	1000 V
Rated Operational Voltage	1000 V
Rated Short-time Withstand Current Low Voltage ( $I_{cw}$ )	for 1 s 50 kiloampere rms
Motor Operational Voltage	220 ... 240 V AC
Power Loss	19 W
Pollution Degree	3
Handle Color	Black
Handle Type	Direct mounted handle
Fourth Pole Position	Right Side
Fourth Pole Type	Switched - Simultaneous Function
Switches Operating Mechanism	Mechanism at the End of the Switch

Distance Between Phases	Standard
Position of Line Terminals	Top In - Bottom Out, Bottom In - Top Out
Operating Mode	Front operated
Mounting Type	Base mounting
Number of Poles	4
Degree of Protection	Front IP20
Transition Type	Open

---

## Environmental

Environmental Information	1SCC303036D0202
---------------------------	-----------------

---

## Certificates and Declarations

Declaration of Conformity - CE	1SCC303027D0201
-----------------------------------	-----------------

---

## Container Information

Package Level 1 Units	1 piece
Package Level 1 Width	580 mm
Package Level 1 Depth / Length	780 mm
Package Level 1 Height	500 mm
Package Level 1 Gross Weight	65 kg
Package Level 1 EAN	6417019453958

---

## Classifications

Object Classification Code	Q
ETIM 8	EC000216 - Switch disconnecter
ETIM 9	EC000216 - Switch disconnecter (low voltage)
eClass	V11.1 : 27371403
WEEE Category	4. Large Equipment (Any External Dimension More Than 50 cm)
E-Number (Finland)	3641776

---

## Categories

Low Voltage Products and Systems → Switches → Change-over and Transfer Switches → Motorized Change-over Switches

